

GLEN ROCK HISTORY

VOLUME 2, ISSUE 3

SUMMER 2015

“COME TO GLEN ROCK” CIRCA 1910

The Glen Rock area was a sleepy, rural farming community for much of its history, starting with the first Dutch settlers in the 1700s. That all began to change rapidly once the Smith-Singer Realty Company came to town in 1908 and became Glen Rock’s major developer. Who could resist the Smith-Singer sales pitch?



Excerpts from “The Deepest Secret of Success, TO KNOW THY OPPORTUNITY! Buy at Glen Rock, N. J.” published by the Smith-Singer Realty Company.

“We do not say off-hand that it is positively what you want; but we DO say if you are looking for a Suburban Home, it is worth your careful consideration; and for these reasons: Glen Rock is Healthful, Mosquitoless, Accessible, Picturesque.

Quite as much so as Ridgewood which it adjoins, with the additional advantage, to you, of getting in On the Ground Floor, Not only in matter of Price, Which is something, of course; But in Choice of Location, Which is a great deal more!”

(continued on Page 2)

SPECIAL THANKS

George Dorbad was first elected Treasurer of the GRHPS in 1995. After 20 years at the financial helm, he has decided to step aside. Thank you, George, for your diligence in keeping our organization on a strong financial footing and for your support over the years.

What else was going on in 1995? Well, here’s a short list:

- O.J. Simpson’s murder trial (and acquittal)
- Dow Jones closed above 4,000 for the first time ever.
- First vaccine for Chicken Pox approved
- Oklahoma City Federal Building bombing
- eBay founded

LOOK INSIDE

NAME GAME p. 2

GRHS SPORTS p. 3

MUSEUM NEWS p. 3

MEMBERSHIP p. 4

U. S. Census Figures for Glen Rock, N. J.

1900: 613

1910: 1,055

1920: 2,181

1930: 4,369

1940: 5,177

1950: 7,145

“COME TO GLEN ROCK”, continued from Page 1

“Not that Glen Rock is entirely new - there are already some 800 residents in the borough - but we refer to the practically unoccupied territory which has only this season been made available to commuters, and of which there is enough that we control to admit of carrying out a system of artistic development quite different from, and as we think, far more attractive than anything existent in this vicinity.

The Erie officials recognizing, as all must do, the exceptional value of this land for home sites, and the absolute certainty that it will fill up rapidly, have cheeefully conceded a commutation rate of \$6.35 per month, which is about half a cent per mile, the tickets also good to Ridgewood.



Glen Rock has electric light, gas and public water; good school and church facilities; is near the shopping district of Paterson (a city of over 100,000 inhabitants) and within the free delivery circuit of the New York department stores.

We can not too strongly impress upon the minds of those who are thinking of making their homes in the suburbs, the immense importance of choosing the Right Locality. Health, happiness, convenience, good neighbors, pleasant surroundings - practically everything, depend upon this one essential.

Above all things, we desire to establish the character of Glen Rock - to make it as attractive socially and as a neighborhood, as it is scenically, and as a building spot. To this end, we are willing to make certain price concessions *at this time*, that will not be offered later on. Hence, for the right ones, AN EXCEPTIONAL OPPORTUNITY! Will YOU investigate?"

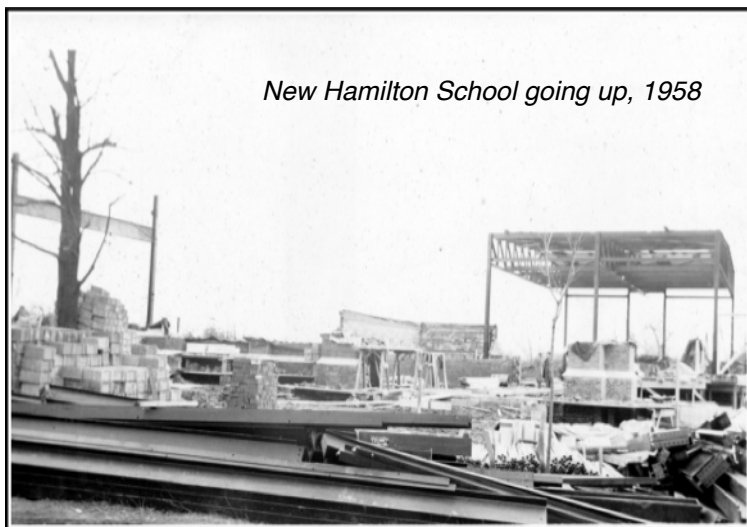
WHAT'S IN A NAME?

Have you ever wondered how things and places in Glen Rock got their names? Our first foray into naming history will start with the Alexander Hamilton School. Many residents may not know that the "first" Hamilton School in Glen Rock was situated in a wing at the Junior High School on Harristown Road - the same wing that had housed the "first" Coleman School while the Pinelynn Road building went up (1954).

In the spring of 1957, the Glen Rock Board of Education announced that the new elementary school on Harristown Road would be named in honor of Alexander Hamilton - American statesman, aide-de-camp of General Washington and first Secretary of the Treasury for the United States. The school's name was selected after a community-wide contest. Furman K. Stanley, President of the Board of Education, reported that Alexander Hamilton was a popular choice among both adults and children participating.

Mr. Stanley further explained, "It is most fitting that in this bicentennial year of the birth of Alexander Hamilton, Glen Rock should pay tribute to one who has contributed so much to the early development of our state and nation."

Although there is disagreement as to Hamilton's exact birth year (either 1755 or 1757), his contributions to the economic and industrial development of northern New Jersey make him worthy of the honor.



GRHS ATHLETICS COLLECTION

Kudos to Bill Carbone and Roy Lott for successfully undertaking the gargantuan task of organizing materials from the Glen Rock High School Athletics Department. These materials include everything from team rosters to scorebooks to yearbook photos to scrapbooks, dating from the 1950s into the 1970s; they have been added to our archives at the Museum at the Station.

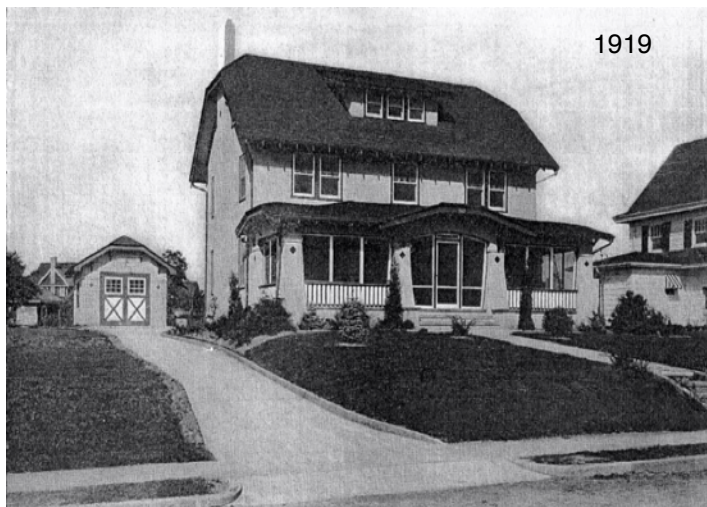
Glen Rock High School opened its doors in 1956, with only freshman and sophomore classes. Juniors and seniors remained enrolled at Ridgewood High. This excerpt from the March 1957 "Glen Rock Schools" newsletter shows the popularity of team sports from the beginning. Intermural offerings at that time were for male students only. In 1957, there were 56 boys enrolled in Glen Rock High School (no mention of the number of girls). 45 boys participated in football and soccer, and 38 participated in basketball, wrestling and fencing.

"It is interesting to note that about 80% of the male enrollment has been participating. The program for the girls has been on an intramural basis. They have been actively engaged in such activities as [field] hockey and soccer in the fall. The afternoon program during the winter has consisted of apparatus, basketball, volleyball and archery."

Look for our display at the Glen Rock Public Library in September, featuring materials from this wonderful collection.



Glen Rock High School cheerleaders, 1958/59



RESIDENCE OF W. W. REYNOLDS, ROCK ROAD, GLEN ROCK

WHAT'S NEW AT THE MUSEUM

The GRHPS is fortunate to own one complete copy of the Ridgewood Herald Illustrated Supplement from January 2, 1919. This oversized booklet contains beautiful photographs of stunning houses - many brand new at the time of publication - in Ridgewood, Glen Rock and Midland Park. However, 96 years of general wear and tear have left our copy in rather fragile condition and we have not been able to put this fascinating piece out for public viewing. Until now. Thanks to Mail and More on Rock Road, our Supplement has been wholly and beautifully scanned and reprinted. Stop in the Main Line Station at one of our Open Houses on the last Sunday of the month and take a look for yourself. We are making the Supplement even more interesting as volunteers, led by Leo Brown, are searching out and photographing the same houses as they appear now. A few of the houses are no longer standing but the majority are still here, albeit altered a bit (many of the porches have been closed in) and hiding somewhat from street view.

We have purchased City Directories from 1931 and 1948 for our library at the Museum at the Station. These books are excellent sources for discovering who lived where at a particular point in time. We now own physical directories from 1915, 1931, 1948 and 1970. Each directory covers Glen Rock, Ridgewood, Midland Park and Fair Lawn.

Our Honor Roll wall of photographs of Glen Rock veterans from World War I continues to expand. If you have a photo of someone on the Honor Roll plaque on The Rock, or of a WWI vet who had a connection to Glen Rock but didn't enlist from here, please send along a scanned copy to GRHistoricalSociety@gmail.com or call 201-447-3865.

G.R.H.P.S.

PRESIDENT: Sue Tryforos
VICE-PRESIDENT: Kay Tuite
TREASURER: Leo Brown
SECRETARY: Barbara Schineller
CORRESPONDING SECRETARY: Diane Herrlett

P. O. Box 581
Glen Rock, NJ. 07452-0581

Phone: 201.447.3865
E-Mail: GRHistoricalSociety@gmail.com

Our headquarters and the Museum are located at
the Main Line Train Station, 176 Rock Road,
Glen Rock, NJ 07452

"Glen Rock History" is edited by SueTryforos

FIND US ON SOCIAL MEDIA:

www.FACEBOOK.com/GlenRockHistory
www.PINTEREST.com/GlenRockHistory
www.INSTAGRAM.com/GlenRockHistory

and visit our website:

www.GlenRockHistory.org

Please support us through the Amazon Smile program
<http://smile.amazon.com/ch/22-3199206>

This publication was made possible by funding provided by:

PAREDES-GRUBE ARCHITECTURE

240 Rock Road, Suite 101, Glen Rock, NJ 07452
(201) 444-6003

Creative Vision, Technical Expertise, and Seamless Architectural Solutions

The GRHPS Mission Statement:

To heighten the public's awareness of, and
appreciation for, the history, growth and development
of Glen Rock, Bergen County, New Jersey.

Our next meeting is: Thursday, **Sept. 17th**, 2015
7:30 pm at the Main Line Station

Meetings are held on the THIRD Thursday of the
month, September through June.

The GRHPS can scan your original materials for our collection
so that you retain your treasures while we add the information
contained therein to our archives. Help us continue to learn
about our borough's past.

THE GRHPS IS A 501(c)3 ORGANIZATION. DONATIONS ARE TAX-DEDUCTIBLE TO THE FULLEST EXTENT OF THE LAW.

MEMBERSHIP INFO

Please join us today

Regular \$10
Supporting \$25
Sustaining \$50+
Corporate \$100+

Become a GRHPS Member

Please send your check, payable to Glen Rock Historical &
Preservation Society, to:
GRHPS, P. O. Box 581, Glen Rock, NJ 07452-0581

Name _____

Address _____

Phone _____ E-Mail _____



Come visit us!

MUSEUM AT THE STATION SCHEDULE

We will be open from 1 - 3 pm on the following dates:

July 26, 2015
August 30, 2015
September 27, 2015

October 25, 2015
November 29, 2015
December 27, 2015